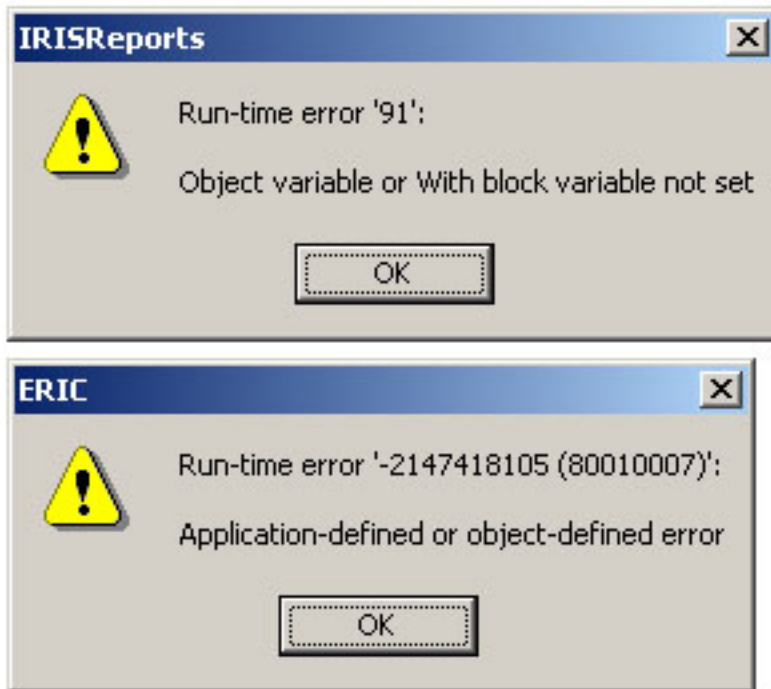




Eric run-time error fix. This fix applies to Version 1.0.75

### Problem:

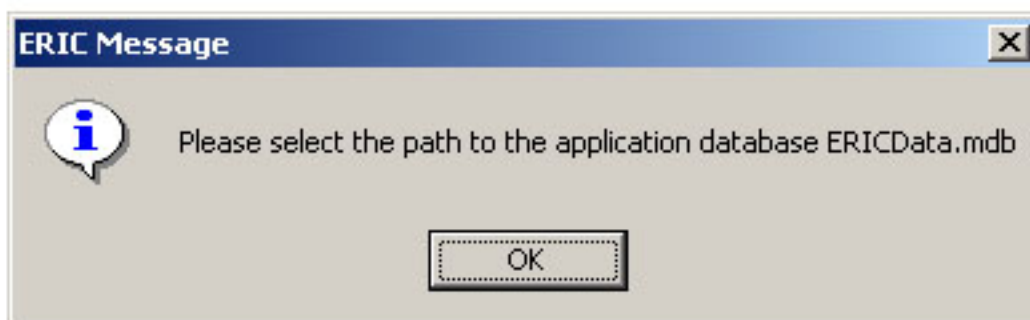
When trying to run reports from Eric, Run-time error messages are displayed, and Eric terminates. The error messages are as follows:



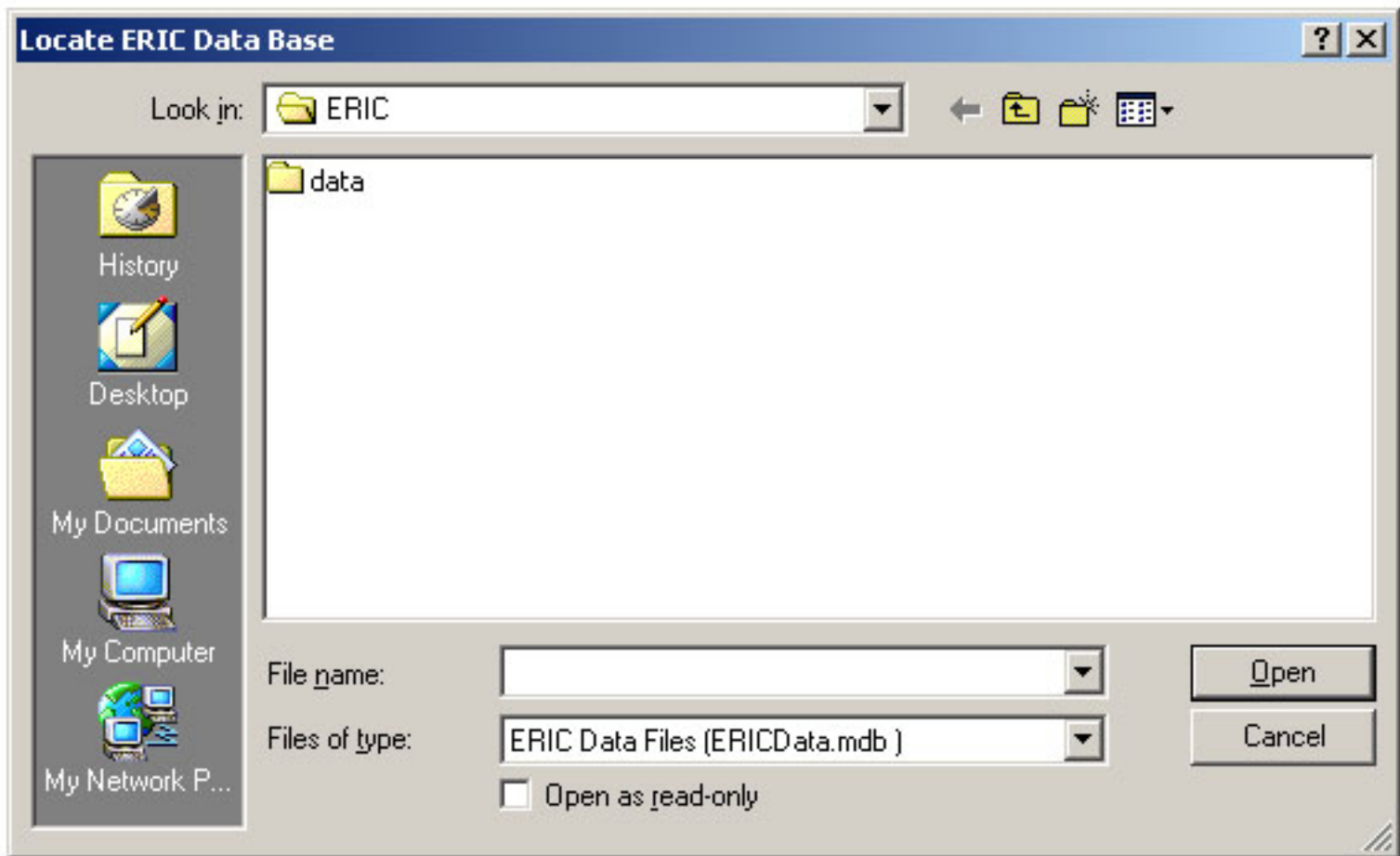
### Solution:

You will need to move Eric's databases to a different location than where they were installed. Detailed instructions are listed below. This fix must be performed while Eric is not running.

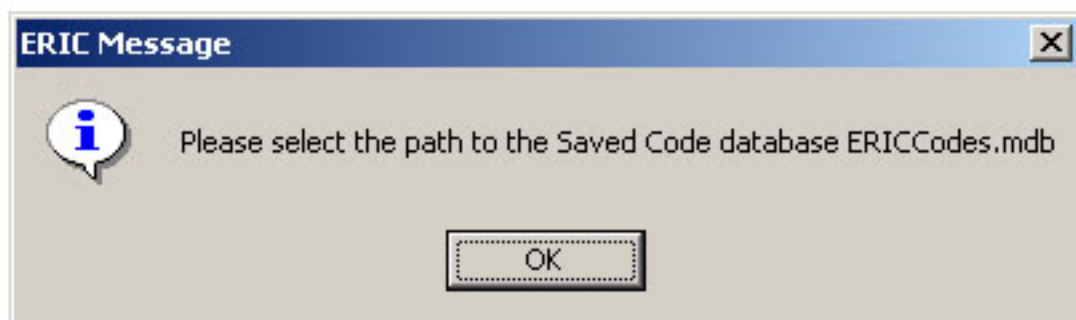
1. If Eric is open, close the program entirely.
2. Open the folder where Eric is installed. This folder by default is **C:\Program Files\Remel\Eric**, but may have been installed elsewhere.
3. Once in the Eric folder, create a New Folder and name it **data**.
4. Cut and Paste the files **EricCodes.mdb**, and **EricData.mdb** into the **data** folder you created in step 2.
5. Start Eric. You will receive the following error message:



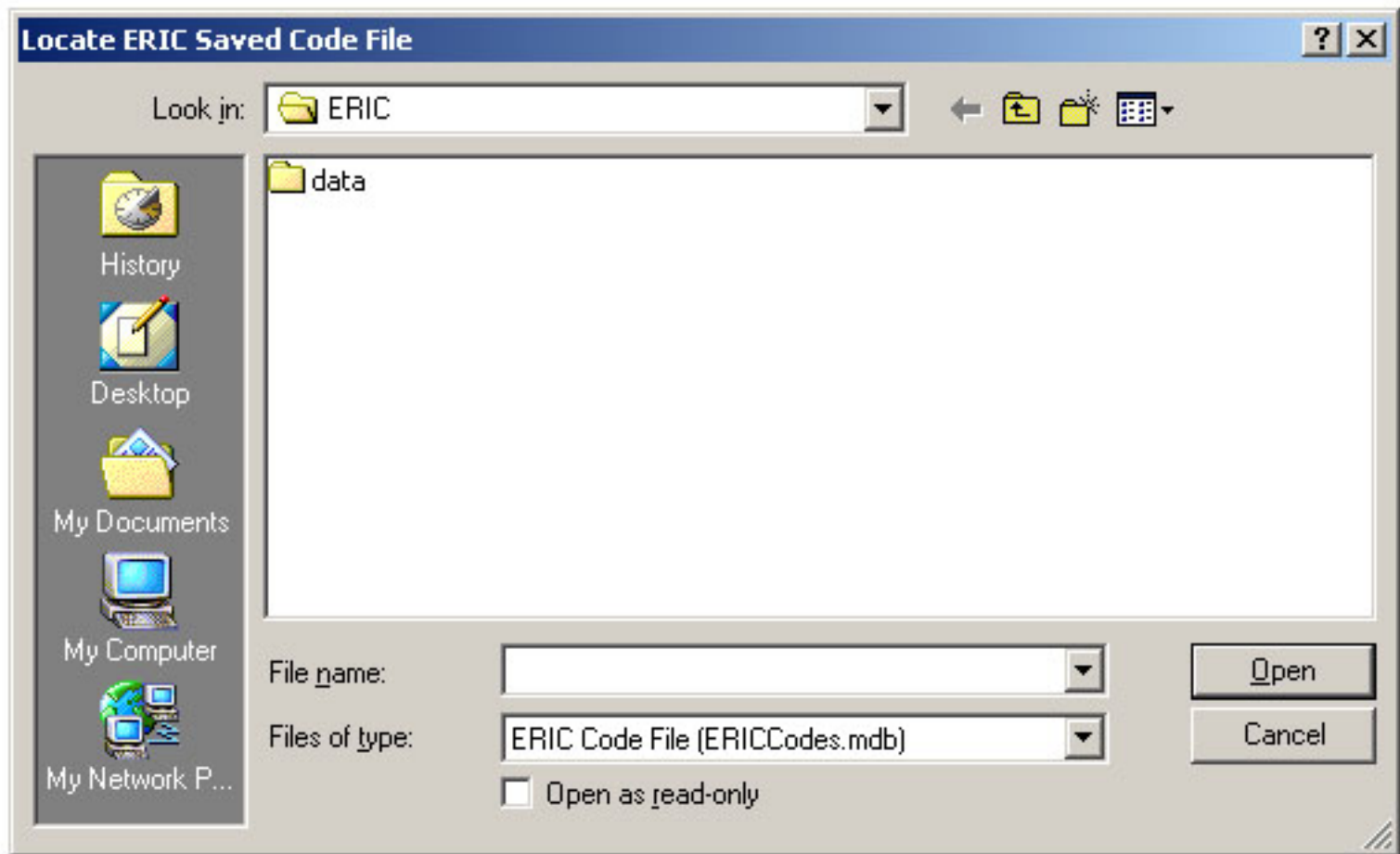
6. When you click the OK button, the following window will open:



7. Open the **data** folder and double-click on the **EricData.mdb** file.
8. Next, you will receive the following error message:



9. When you click on the OK button, the following window will open:



10. Open the **data** folder and double-click on the ***EricCodes.mdb*** file.

11. Next you will be prompted to login.

By performing these steps, you will gain the ability to run reports from Eric.