

# Spectra™ MRSA

## Detection of MRSA from positive blood culture



Bloodstream infections with MRSA can cause significant morbidity and mortality and result in considerable healthcare related costs. The impact on patient outcome is tremendous.

**MRSA bacteremia can result in \$71,715 of additional hospital costs and can increase length of stay by 10 days over MSSA bacteremia.<sup>2</sup>**

Your lab can't afford to wait and neither can your patients.

Early recognition of MRSA bloodstream infections is critically important for patient management. Inappropriate empiric therapy has been associated with higher in-hospital mortality.<sup>1</sup>

### Results You Can Trust

- Exceptional accuracy for the detection of MRSA
- More confidence earlier with high positive and negative predictive value

### Effective and Economical

- Minimal hands-on time reduces labor costs compared to other methods
- Up to 24 hours faster time to results vs. traditional methods

### Flexible Solution

- Compatible with all commercial blood culture systems
- Easy method that can fit into the routine workflow of any size clinical microbiology laboratory

Reported Clinical Performance	
MRSA Agreement	97.4%
Non-MRSA Agreement	99.0%
Positive Predictive Value	97.4%
Negative Predictive Value	99.0%
Overall Agreement	98.5%



**remel**

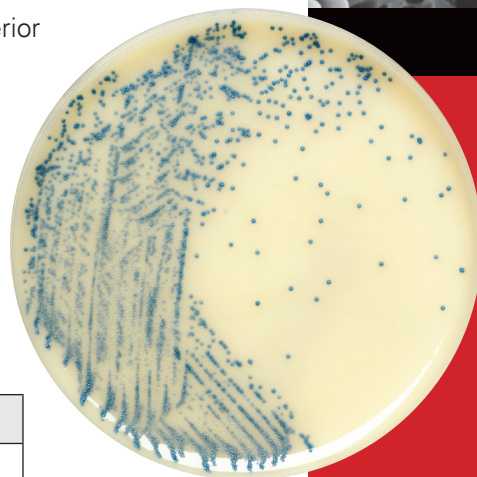
Part of Thermo Fisher Scientific

## Be confident earlier with a flexible and economical method to detect MRSA from positive blood cultures.

Let Spectra™ MRSA be your standard for MRSA detection in your laboratory. Spectra MRSA combined with the VersaTREK® automated microbial detection system can maximize your workflow and flexibility for MRSA bloodstream infections.

To aggressively address the MRSA epidemic, you need a reliable partner to help you respond efficiently and economically to the challenge. We deliver the science, service, and solutions you can count on when you need it most. Our expertise is backed by stringent quality assurance, reliable service, on-time delivery, and superior customer support.

- Over 35 years of media experience
- Dedicated, responsive customer support
- Highly trained technical service
- ISO and FDA compliant facilities
- Multiple delivery options, including next-day



Description	Packaging	Ref
Spectra™ MRSA	10 Plates/Pk 100 Plates/Pk	R01821 R01822
<i>S. aureus</i> ATCC® 25923 (MSSA)	5 Loops/Pk	R4607010
<i>S. aureus</i> ATCC® 29213 (MSSA)	5 Loops/Pk	R4607011
<i>S. aureus</i> ATCC® 43300 (MRSA)	5 Loops/Pk	R4609022
Blood Agar	10 Plates/Pk 100 Plates/Pk	R01200 R01202
Gram Stain Kit	4 Bottles/Kit	R40080
Gram Stain Kit, Enhanced	5 Bottles/Kit	R40240
VersaTREK® Instrument	Each	6240-04 through 6240-10* 6528-14 through 6528-22*
Sensititre® Gram Positive Plate	10/box	GPALL1F

\*REF depends on the number of drawers ordered



To learn more about Remel Healthcare-Associated Infection solutions, and to see how the **MRSA Screening Cost Analyzer** can help you understand how to reduce unnecessary isolation costs, visit [www.remel.com/hai](http://www.remel.com/hai) or contact your Remel Technical Sales Representative.



#### References:

1. Herzke A., et al. Infection Control and Hospital Epidemiology; 2009; 30: 1037-1061.
2. Ben-David D., et al. Infection Control and Hospital Epidemiology 2009; 30: 453-460.

Learn more about VersaTREK and Sensititre at [www.trekds.com](http://www.trekds.com)